



## IPC Fast Operation User Manual —HD-IP Camera



Please refer to the complete User manual for more information from the CD.

### 1 The Important Safety Information

Please be sure to read the following important safety information before install and use the product.

**CAUTION:**

**RISK OF ELECTRIC. DO NOT OPEN**

**CAUTION:**  
TO REDUCE THE RISK OF ELECTRIC DO NOT REMOVE COVER OR BACK NO USER SERVICEABLE PARTS INSIDE. REFER SERVICING TO QUALIFIED SERVICE PERSONNEL.

**CAUTION:**  
TO PREVENT ELECTRIC SHOCKS AND RISK OF FIRE HAZARDS, DO NOT USE OTHER THAN SPECIFIED POWER SOURCE.

**Notes:**

- The power supply must through safe attestation. Its output voltage, current, voltage polarity and operating temperature must match the camera's requirement.
- When using the camera in the thunderbolt condition, please note to mount Anti-thunder device or put off the power supply plug and cable.
- In order to capture high quality pictures, the power supply's cable and video output cable should not be too long.

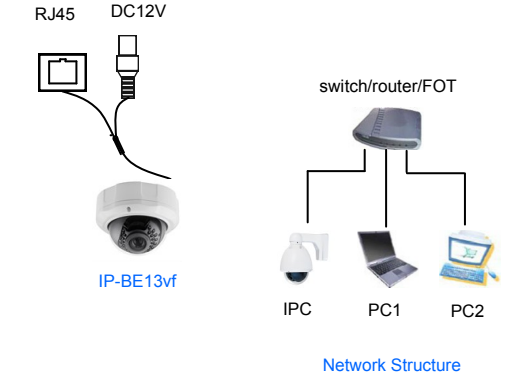
### 2 Brief Introduction of the products

Model	IP-BE13vf
Image Sensor	1/3" Aptina Low Illumination 1.3 Megapixel CMOS Sensor
Resolution	960P@25fps,720P@25fps,D1@25fps
Minimum Illumination	0.1Lux
S/N Ratio	>50db
Focus Mode	Manual
Day/Night	IR cut filter with auto switch
Network	1 RJ45 Ethernet interface, 10/100M adaptation
Delay	Within The LAN0.3S
Frame Rate	25 FPS ( Adjustable)
Video Compression	H.264 / JPEG
Protocol	Protocols: TCP/UDP/RTSP/FTP/PPPOE/DHCP/DDNS/NTP/UPnP/SMTP Support Onvif 2.0
Onvif	Support Onvif 2.0
User Permission	Multi-user Classification Management
Power	DC 12V/1000MA
Consumption	3.0W
Lens	2.8-12mm Manual Zoom Lens
IR Status	IR LED: ϕ5X30PCS IR range: 25M
Dimension (mm)	ϕ 140x 110(H) mm
Weight (g)	1200
Temperature	-20~50℃
Humidity	0%-90%RH,Without Condensation

### Features:

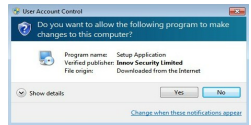
- ◆ Weatherproof IR Camera IP66
- ◆ Advanced H.264 High profile compression
- ◆ Support all kinds of browsers:IE,Chrome,Firefox
- ◆ Support several servers, IP address, DDNS, FTP,SMTP
- ◆ Support single, dual, three streams
- ◆ Support iPhone, iPad, Android remote monitor
- ◆ Support connect to NVR
- ◆ Support ONVIF2.0
- ◆ Reliability and compatibility
- ◆ Low streams and high resolution image

### 3 Connection

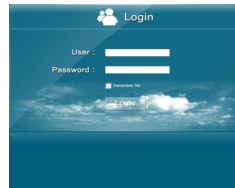
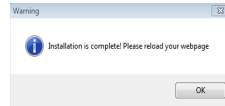


### 4 Access to the IP Camera via IE

1. Use correct power supply
2. Make sure the device IP address is in the same LAN with the router, the default IP address of the IPC is 192.168.1.168
3. Go to CD->IPCSearch.exe and copy it to your computer
4. Open IPC Search, click "Search", you will find the device IP, and you also can modify the IP information, see the picture on the left:
5. Factory default IP setting:  
IP Address : 192.168.1.168  
Subnet Mask : 255.255.255.0  
Gateway : 192.168.1.1  
User name : admin  
Password : admin
6. After modifying IP, click "Search" again, you will find the new IP of the your device. Double-click the new IP, you can access to the IPC via IE, or enter the IP Address in the address bar of IE, then click "Enter", the download\_OCX controls interface please see below picture:



Then it will install the OCX, when complete ,the window below will pop up:



Click "OK" and refresh the page. You will enter the login interface, as is shown in the left picture:

Enter your username and password, you can start to access and control your IP Camera.

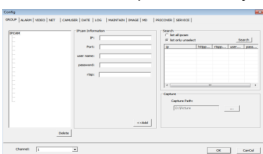
### 5 Access to the IP Camera via Multi\_window

Go to CD->find Multi\_window.exe. Copy Multi\_window.exe to your computer and install it, then run it. See below:



**1. Config:Group.** See below: Here you can add your IP Cameras and set the Capture Path. If you

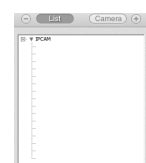
forget the IP Address, you can click "Search" to search your IP Cameras. You can select "List all ipcam" or "List only unselect", then



double click the IP info to add the camera. You also can enter the IP Info manually in the "IPcam Information area" Then you can view the images and set the parameters of IP Camera, such as Alarm, Video, Net, Camuser, Date, etc. Please refer to Multi\_window Customer Manual for detail.

### 2. View the images

After adding the devices, you can see the devices in "List" of the main interface, you can double \_click the device to control it to play or stop. See below picture: You also can control



the devices in "Camera", see the picture on the right:

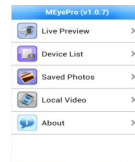


### 6 Access to the IP Camera via Android mobile

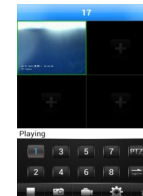
Search and download the surveillance software "MEyepro" to your mobile from electronic markets or the Mobile Assistant,

then install it. Then you can see the icon of the software ,click it to run.

**1.** The following picture shows the main interface:



**2. Live view**  
See the picture on the right.



Click the button "PTZ" , and you will see the PTZ function buttons, see below picture:



Button function:

Button	Name	Button	Name
	Play		Switch channels
	Snapshot		PTZ Control
	Local Record		Zoom
	Configure		Focal
	PTZ		Iris
	About		

### 3. Device list

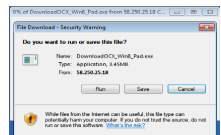


: Add device, Input Device name, IP address or domain name, port, username, password, Max Channel, then click "OK" to finish and save.

: Edit device. Modify Device name, IP address or domain name, port, username, password, Max Channel, then click "OK" to finish.



7. Please click here to download the OCX controls, as is shown in the following picture:



to download the OCX controls, as is shown in the following picture:

Click run, the system will automatically download the OCX, click "yes" in the following picture:

:Delete device. If you want to delete the device, please click this button, then select the device name to delete it.

#### 4.Saved photos

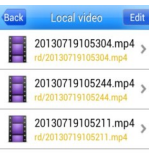
Please see the picture on the right:



If you want to delete the photos, select the photo and click "Delete" on the top right of the interface, it will pop up a tip, click "OK" to delete the photo.

#### 5.Local Video

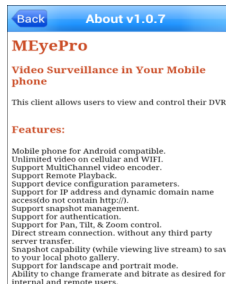
Please see the picture on the right:



Select the file to playback. If you want to delete the videos, select the video and click "Delete" on the top right of the interface, it will pop up a tip, click "OK" to delete it.

#### 6.About

Please see the picture on the right:



It is the information about the monitor software.

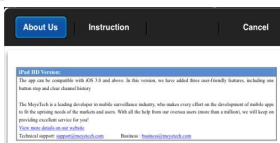
- Double tap again to return to multi view.
- Touch a channel on the screen and drag it to the channel position to rearrange your viewing window. As is shown in the following figure:



- Switch the channel viewing mode from four to six using these buttons on the control bar:

#### 4.About

It is the information about the monitor software. As is shown in the picture on the right:



#### 5.Other Buttons

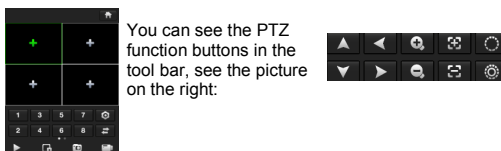
Button	Name	Button	Name
	Play		PTZ
	Snapshot		PTZ Control
	Local Record		Zoom
	System settings		Focal

#### 7 Access to the IP Camera via iPhone

Search and install the surveillance software "ASee+" on line to your mobile from App store. Then you can see the icon of the

software click it to run.

1.The following picture shows the main interface:



You can see the PTZ function buttons in the tool bar, see the picture on the right:

Button function:

Button	Name	Button	Name
	Play		Clear
	Snapshot		PTZ Control
	Local Record		Zoom
	Menu		Focal
	Iris		

#### 2.Device list

: Add device. Input Device name, IP address or domain name, port, username, password, Channel number, then click "Save" to finish.

Button	Name	Button	Name
	Iris		Switch channels
	Stop		Clear
	Photos		Records
	About		

#### 4 Package List

NO.	Name	Model	Number (pcs)
1.	HD-IP Camera	IP-BE13vf	1
2.	CD	IP-BE13vf	1
3.	IPC Fast Operation User Manual	IP-BE13vf	1



:Edit the device. Modify Device name, IP address or domain name, port, username, password, Max Channel, then click "Save" to finish.

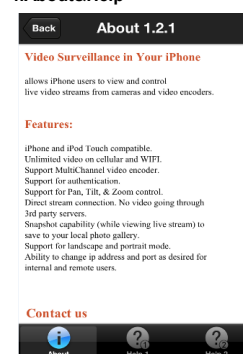


:Delete device. If you want to delete the device, please click this button, then select the device name to delete it.

#### 3.Local files

**Photos** :Select the photos to view. If you want to delete the photos, select the photo and click "Delete" on the bottom-right of the interface, it will pop up a tip, click "OK" to delete the photo.  
**Records**: Select the file to playback. If you want to delete the records, click "Edit", click "Delete" to delete the record, then click "Done" to finish.

#### 4.About&Help

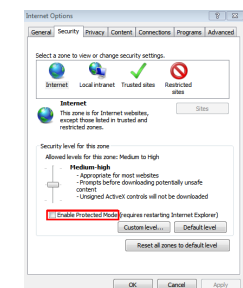


It is the information about the monitor software. As is shown in the left picture:

#### 5 FAQ

##### 1.Why cannot capture?

Answer: If you capture failed and the storage folder cannot pop up automatically ,please check your IE, don't select "Enable protected mode", as is shown in the following figure:



##### 2.Why can not access the camera after update?

Answer: Clean browser cache.  
 Steps: open IE, click "Tools" and select "Internet Options", then you can see "Temporary Internet files" and click "Delete Files", it will prompt a dialog you need to check "Delete all offline content" and click "OK".  
 You also can click "Start" and select "Run" then enter "cmd", enter "arp -d" in "Command Prompt" interface. Re-access the camera.

##### 3.Why can not show the whole interface?

#### 8 Access to the IP Camera via iPad

Search and download the surveillance software "ASee+" to your mobile from App store and install it. Then you can see the

icon of the software ,click it to run.

1.The following picture shows the main interface:



#### 2.Device Management

: Add device, Input Device name, IP address or domain name, port, username, password, Max Channel, then click "OK" to finish and save.

: Edit device.

Modify Device name, IP address or domain name, port, username, password, Max Channel, then click "OK" to finish.



:Delete device. If you want to delete the device, please click this button, then select the device name to delete it.

#### 3.Channel Control

- To start playback, touch the square on the on the play screen to select ( note green border on selected square) : then double tap a channel in the list on the left to start viewing. Double tap a camera to view in full screen.
- While in full screen mode , swipe left or right to change the live channel to the next/previous cam.

Answer: Close some options of IE.

Steps: Open IE, click "View" and select "Toolbar", close the "Favorites bar", "Status bar" and "Command bar".

#### 4.Why cannot I watch the mobile surveillance video after entering the login information?

- A. Please check whether the settings page, server, port, user name, password and other information are filled in correctly.
- B. Please check your network to see whether your phone is connected to the external network .
- C. If your device is connected to the external network via router, please check whether the mobile port mapped in the routing . (For mapping settings, please refer to the router manual).
- D. Please check whether the IP address you have filled in is the LAN IP (If your IP starts with the following format, it is a local area network : 10.xx . 172.xx. 192.xx. If you use such IP, you can only be in the same LAN with the device to be connected).
- E. Please check your port to ensure that it must be the mobile port.

#### 5.Why does it show "Get Param Failed"?

Answer : 1.Please check the IP information, such as port.  
 2.Please make sure the IP Camera connected correctly.  
 3.The network status is poor.

#### 6.I have already added the device, why it shows "Initial Failed!"?

Solution: Please delete the device and add it again.